

单相220V/三相380V

Single-phase 220V/three-phase 380V

E系列永磁变频螺杆空压机

Permanent magnet frequency conversion screw air compressor E series

高效 节能 可靠 环保

Efficient, energy-saving, reliable, and environmentally-friendly



苏州晨恩斯可络压缩机有限公司

SUZHOU CHANUN SCREW COMPRESSOR Co., LTD.

400-691-9399
0512-62529535/69568599

www.chanun.com.cn

苏州工业园区东富路58号
Building 3, 58 Dongfu Road, Suzhou Industrial Park

0512-62870765

sales@chanun.com.cn



公众号
official subscription



财富号
fortune subscription

本册所含机型型号参数外观如有改动恕不另行通知
如有疑问请拨打官方电话咨询！

The models, parameters and appearance of any products contained in this manual are subject to changes without prior notice. In case of any questions, please call the official number.

一站式空气系统解决方案

One-stop air system solutions

精灵系列
Spirit Series

晨恩智造
CHANUN Intelligent manufacturing

企业沿革 Our History

- 1999 组建空气压缩机设计团队
Establishment of air compressor design team
- 2006 成立苏州晨恩公司
Foundation of SUZHOU CHANUN SCREW COMPRESSOR Co., LTD
- 2008 新能源汽车无油空压机实现批量生产
Batch production of oil-free air compressor for new energy vehicles
- 2009 新能源汽车用螺杆式空压机上市
Launch of screw air compressor for new energy vehicles
- 2011 新能源汽车无油活塞空压机上市
Launch of oil-free piston air compressor for new energy vehicles
- 2014 医疗专用无油空压机上市
Launch of oil-free air compressor for medical purpose
- 2015 成功研发中高压无油活塞空压机，适用于激光及各领域
Successful development of medium and high pressure oil-free piston air compressor used for laser and other fields
- 2016 8条自动化流水线并线成功，年生产能力达12万台以上
Successful merging of 8 automated manufacturing lines, with an annual production capacity of more than 120,000 units
- 2017 无油螺杆空压机上市
Launch of oil free screw air compressor
- 2018 永磁变频双级压缩螺杆空压机上市
Launch of permanent magnet variable frequency two-stage screw air compressor
- 2019 着手研发离心式空压机
We started to develop c+ centrifugal air compressor
- 2020 国家高新技术企业、江苏省民营科技企业
National High-tech Enterprises, private science and technology enterprises in Jiangsu Province
- 2021 全新E系列上市
The new E-series is on the market

企业简介 Company Profile

苏州晨恩是一家拥有自主知识产权的国家高新技术型企业，拥有30余项国家级专利，依托雄厚的轨道交通专用空压机技术平台，专业从事高品质空压机的研发和制造。产品大类有高品质螺杆空压机、环保无油静音空压机，适用于新能源客车、轨道交通、医疗、节能、环保、机械、光学、科研等需要洁净压缩空气的领域。我公司本着“科技无限 共启梦想”的使命，致力于做最专业的空气压缩机，与您 共赢新时代发展机遇！

With more than 30 national patents, Suzhou CHANUN is a high-tech enterprise that boasts independent intellectual property rights, relying on a strong technical platform for rail transit air compressors and specializing in the development and manufacturing of high-quality air compressors. The products include high-quality screw air compressors, environmentally-friendly oil free silent air compressors for applications in new energy buses, rail transit, healthcare, energy saving, environmental protection, machinery, optics, scientific research and other fields requiring clean compressed air. In pursuit of the mission of "striving for a shared dream with infinite technology", our company is committed to becoming the most professional air compressor manufacturer and sharing with you new opportunities for a win-win development in the new era!

企业目标 Our Goal

从专业者走向领导者
From Professionals to Leaders

企业使命 Our Mission

创新助力 梦想起航
Start on Dream with Innovation

核心价值观 Core Values

诚信 共赢 创新 和谐
Integrity, Win-win, Innovation and Harmony

History Progress Achievement

关于我们

About Us

苏州晨恩斯可络压缩机有限公司



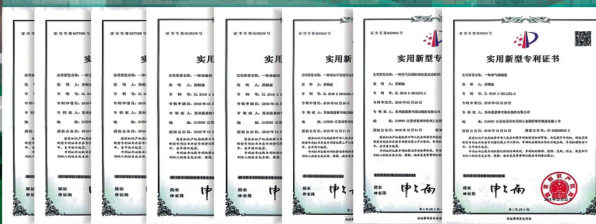
公司资质 专利技术

Qualification Proprietary Technology

10+
研发团队

4
发明专利

30+
实用专利



单相220V/三相380V螺杆空压机机器内部结构图

SINGLE-PHASE 220V / 380V THREE-PHASE STRUCTURE INSIDE THE MACHINE SCREW COMPRESSOR OF FIG.

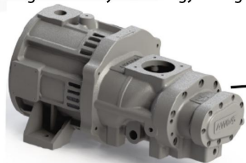
外置进风过滤网

External air inlet filter.



“IE4” 永磁变频电机， 高效节能、省电。

"IE4" permanent magnet variable frequency motor, high efficiency and energy saving.



晨恩回归传统高效主机， 6颗轴承，莫氏锥度连接 真正一体主机。

Chanun returns to traditional high-efficiency host, 6 bearings, morse taper connection to truly integrated host.



晨恩新型机头下部， 并拥有自主知识产权。

The lower part of Chanun's new nose, and has independent intellectual property rights.



加大转子风扇， 散热快，噪音低。

Enlarge the rotor fan, Faster heat dissipation, low noise.



立式智能进气阀 控制进气效果更方便。

Vertical intelligent intake valve, it is more convenient to control the air intake effect.



外置油分、油滤，独特“六角”设计 为客户保养维护更加简单、方便。



External oil, Oil filter, unique "hexagonal" design, maintenance for customers is simpler and more convenient.



加大冷却器散热， 冷却效果迅速。

Increase the heat dissipation of the cooler, and the cooling effect is rapid.



回归传统“860”操作面板， 操作简单。

Back to the traditional "860" operation panel, simple operation.



重型标准变频器， 性能可靠，使用简单。

Heavy-duty standard inverter, reliable performance, simple to use.

安装合理， 水平横向布局设计。

Reasonable installation, horizontal and horizontal layout design.



终身无忧， 防爆油镜安全可靠。

Worry-free for life, explosion-proof oil mirror is safe and reliable.

“质”现代 · “智”未来

○ 多项发明专利 完整系统设计 ○



单相220V/三相380V E系列永磁变频螺杆空压机

SINGLE-PHASE 220V /THREE-PHASE 380V PERMANENT MAGNET VARIABLE FREQUENCY SCREW AIR COMPRESSOR E SERIES

▶ 用电成本节约50%以上

ELECTRICITY COST SAVING BY MORE THAN 50%

单相220V适用场景广泛，宽电压使用，变频技术，启动电流小，居民用电也可以，成本是工业用电一半左右220V变频电机比普通电机能效高出50%。

Single-phase 220V, with wide applicable scenes, wide voltage service, frequency conversion technology, and small starting current Residential electricity is also accepted, and its cost is about 1/2 of that of industrial electricity 220V variable-frequency motor has the energy efficiency 50% higher than that of the ordinary motor.



▶ 变频VSD:降低能源费用支出 REDUCE ENERGY COSTS

各种工况下，气体需求量都会上下浮动。CHANUN经过对市场需求量的大量调研与测算，证实在不同情况下，对压缩机的气量需求有着显著差异。大约仅10%的应用场合需要稳定的供气量。所以，变频式压缩机能发挥较大的节能作用。

能源成本往往占到一台压缩机生命周期成本的70%。生产压缩空气可能占到工厂所有电力成本的40%。几乎在每一个工厂中，用气量都会随着不同的时间段而不同，有其高低峰时段。CHANUN永磁变频螺杆空压机，可以完全按照用气量要求来供气，不但可节省大量能源，同时还可子孙后代保护环境。

Under different conditions, the demand for gas will float. Through a large number of research and calculation of market demand, Chanun confirmed it. Only about 10% of applications require stable air supply. Therefore, frequency conversion compressor can play a greater role in energy saving.

Energy cost often accounts for 70% of the life cycle cost of a compressor. The production of compressed air may account for 40% of all electricity costs in the plant. In almost every factory, the gas consumption will vary with different time periods, with its high and low peak periods. Chanun permanent magnet variable frequency screw air compressor can supply gas completely according to the requirements of gas consumption, which can not only save a lot of energy, but also protect the environment for future generations.

▶ 产品参数表 Product Parameters Table

型号	功率kW	马力HP	电压V	压力 (bar)	排量L/min	储气罐L	尺寸mm	出口尺寸
C5E	3.7	5	220/380	8	200-400	100	1020*540*1035	G1/2
				10	175-350			
				12.5	150-300			
C6E	4.5	6	220/380	8	250-500	100	1020*540*1035	
				10	210-420			
				12.5	180-360			
C7E	5.5	7	220/380	8	315-630	100	1020*540*1035	
				10	275-550			
				12.5	210-420			
C10E	7.5	10	220/380	8	490-980	160	1060*560*1270	
				10	450-900			
				12.5	400-800			
C12E	9	12	220/380	8	600-1200	200	1300*580*1375	
				10	540-1080			
				12.5	460-920			

※ 机器其他颜色-详询CHANUN

Please contact CHANUN to choose colors of the machine

※ 高温、高湿、高寒、高粉尘等恶劣工况下使用的机器为非标机型。排气量是在额定排气压力下测得，根据国标 GB3853 测试（等同于 ISO1217 附录 C）。

The machine used in the poor working conditions with high temperature, high humidity, high cold, and high dust is non-standard machine. The gas displacement is measured under the rated discharge pressure, and it is tested according to GB standard GB3853 (Equivalent to Appendix C of ISO1217).

※ 外观、规格如改进，恕不另行通知。

Improvement in appearance or specification, without further notice.

单相220V/三相380V

EH系列永磁变频螺杆空压机

SINGLE-PHASE 220V/THREE-PHASE 380V PERMANENT MAGNET VARIABLE FREQUENCY
SCREW AIR COMPRESSOR EH SERIES



- ✓ 整机无乳化风险
No risk of emulsification
- ✓ 主机质保2年（含机头积水引起）
Air end warranty for 2 years (including caused by water accumulated in the nose)

产品参数表 Product Parameters Table

型号	功率kW	马力HP	电压V	压力 (bar)	排量L/min	储气罐L	尺寸mm	出口尺寸
C5EH	3.7	5	220/380	8	200-400	100	1020*540*1035	G1/2
				10	175-350			
				12.5	150-300			
C6EH	4.5	6	220/380	8	250-500	100	1020*540*1035	
				10	210-420			
				12.5	180-360			
C7EH	5.5	7	220/380	8	315-630	100	1020*540*1035	
				10	275-550			
				12.5	210-420			
C10EH	7.5	10	220/380	8	490-980	160	1060*560*1270	
				10	450-900			
				12.5	400-800			
C12EH	9	12	220/380	8	600-1200	200	1300*580*1375	
				10	540-1080			
				12.5	460-920			

抗乳化 EMULSION RESISTANCE

压缩机内含有 1 套精准可靠的 ATS（自动恒温装置），使空压机启动后润滑油温度保持在恒定区间，以保证空压机排气温度达到压缩空气露点温度以上，避免冷凝水析出，防止油品乳化。

There is a set of accurate and reliable ATS in the air compressor, so that the lubricating oil temperature will be kept constant after the start of air compressor, This is to guarantee the air compressor discharge temperature to be above the dew point temperature of compressed air, therefore, avoiding condensed water precipitation and preventing oil emulsion.

单相220V/三相380V

EF系列冷干机一体式永磁变频螺杆空压机

SINGLE-PHASE 220V/THREE-PHASE 380V INTEGRATED COLD DRYER PERMANENT
MAGNET VARIABLE FREQUENCY SCREW AIR COMPRESSOR EF SERIES



产品参数表 Product Parameters Table

型号	功率kW	马力HP	电压V	压力 (bar)	排量L/min	储气罐L	尺寸mm	出口尺寸
C5EF	3.7	5	220/380	8	200-400	130	1420*540*1035	G1/2
				10	175-350			
				12.5	150-300			
C6EF	4.5	6	220/380	8	250-500	130	1420*540*1035	
				10	210-420			
				12.5	180-360			
C7EF	5.5	7	220/380	8	315-630	130	1420*540*1035	
				10	275-550			
				12.5	210-420			
C10EF	7.5	10	220/380	8	490-980	220	1480*560*1270	
				10	450-900			
				12.5	400-800			
C12EF	9	12	220/380	8	600-1200	240	1700*580*1375	
				10	540-1080			
				12.5	460-920			

※ 机器其他颜色-详询CHANUN
Please contact CHANUN to choose colors of the machine

※ 高温、高湿、高寒、高粉尘等恶劣工况下使用的机器为非标机型。排气量是在额定排气压力下测得，根据国标 GB3853 测试（等同于 ISO1217 附录 C）。
The machine used in the poor working conditions with high temperature, high humidity, high cold, and high dust is non-standard machine. The gas displacement is measured under the rated discharge pressure, and it is tested according to GB standard GB3853 (Equivalent to Appendix C of ISO1217).

※ 外观、规格如改进，恕不另行通知。
Improvement in appearance or specification, without further notice.

单相220V/三相380V

EV系列永磁变频螺杆空压机

ENHANCED VERSION OF SINGLE PHASE 220 V/THREE-PHASE 380V
PERMANENT MAGNET VARIABLE FREQUENCY SCREW AIR COMPRESSOR EV SERIES

- ✓ IE4永磁电机
- ✓ 恒压·静音
- ✓ 占地面积小
- ✓ 大尺寸主机，低转速，气量足
- ✓ 六颗重载轴承，莫氏锥度连接
- ✓ 安装方便，易维护
- ✓ IE4 permanent magnet motor
- ✓ Constant pressure and silence
- ✓ Small footprint
- ✓ Large size air end, low speed, sufficient air volume
- ✓ Six heavy-duty bearings, Morse taper connection.
- ✓ Easy to install and maintain

产品参数表 Product Parameters Table

型号	功率kW	马力HP	电压V	压力 (bar)	排量L/min	储气罐L	尺寸mm	出口尺寸
C5EV	3.7	5	220/380	8	200-400	/	800*540*755	G1/2
				10	175-350			
				12.5	150-300			
C6EV	4.5	6	220/380	8	250-500	/	800*540*755	
				10	210-420			
				12.5	180-360			
C7EV	5.5	7	220/380	8	315-630	/	800*540*755	
				10	275-550			
				12.5	210-420			
C10EV	7.5	10	220/380	8	490-980	/	800*560*860	
				10	450-900			
				12.5	400-800			
C12EV	9	12	220/380	8	600-1200	/	910*580*1000	
				10	540-1080			
				12.5	460-920			

※ 机器其他颜色-详询CHANUN
Please contact CHANUN to choose colors of the machine

※ 高温、高湿、高寒、高粉尘等恶劣工况下使用的机器为非标机型。排气量是在额定排气压力下测得，根据国标GB3853 测试（等同于 ISO1217 附录 C）。
The machine used in the poor working conditions with high temperature, high humidity, high cold, and high dust is non-standard machine. The gas displacement is measured under the rated discharge pressure, and it is tested according to GB standard GB3853 (Equivalent to Appendix C of ISO1217).

※ 外观、规格如改进，恕不另行通知。
Improvement in appearance or specification, without further notice.



一级节能 减少资源浪费
First level energy saving and reducing the waste of resources.



一体化压缩空气站

INTEGRATED COMPRESSED AIR STATION

- ✓ 高集成 ✓ High Integration
- ✓ 纯净压缩空气 ✓ Pure Compressed air
- ✓ 恒压·静音 ✓ Constant voltage/mute
- ✓ 占地面积小 ✓ Small footprint
- ✓ 7英寸触摸屏 ✓ 7 Inch touch screen

内含:

- ✓ 空压机 ✓ Air compressor
- ✓ 储气罐 ✓ Gas Tank
- ✓ 冷冻干燥机 ✓ Freeze Dryer
- ✓ 精密过滤器 ✓ Precision filter
- ✓ 自动排水器 ✓ Automatic Drain



- ✓ 一站集成 ✓ One-stop integration
- ✓ -40°C露点温度(常压) ✓ -40°C dew point temperature (Atmospheric)
- ✓ 恒压·静音 ✓ Constant voltage/mute
- ✓ 占地面积小 ✓ Small footprint
- ✓ 7英寸触摸屏 ✓ 7 Inch touch screen
- ✓ 即插即用 ✓ Plug and play

内含:

- ✓ 空压机 ✓ Air compressor
- ✓ 储气罐 ✓ Gas Tank
- ✓ 模组干燥机 ✓ Modular Drier
- ✓ 精密过滤器 ✓ Precision filter
- ✓ 自动排水器 ✓ Automatic Drain



产品参数表 Product Parameters Table

型号	功率kW	马力HP	电压V	压力 (bar)	排量L/min	储气罐L	尺寸mm	出口尺寸
C5K	3.7	5	380	8	200-400	200	950*1125*1800	G1/2
				10	175-350			
				12.5	150-300			
C7K	5.5	7		8	315-630	200	950*1125*1800	
				10	260-520			
				12.5	190-380			
C10K	7.5	10		8	490-980	200	950*1125*1800	
				10	450-900			
				12.5	400-800			
C12K	9	12		8	600-1200	200	950*1125*1800	
				10	540-1080			
				12.5	460-920			

※ 机器其他颜色-详询CHANUN
Please contact CHANUN to choose colors of the machine

※ 高温、高湿、高寒、高粉尘等恶劣工况下使用的机器为非标机型。排气量是在额定排气压力下测得，根据国标 GB3853 测试（等同于 ISO1217 附录 C）。
The machine used in the poor working conditions with high temperature, high humidity, high cold, and high dust is non-standard machine. The gas displacement is measured under the rated discharge pressure, and it is tested according to GB standard GB3853 (Equivalent to Appendix C of ISO1217).

※ 外观、规格如改进，恕不另行通知。
Improvement in appearance or specification, without further notice.

产品参数表 Product Parameters Table

型号	功率kW	马力HP	电压V	压力 (bar)	排量L/min	储气罐L	尺寸mm	出口尺寸
C5H	3.7	5	380	8	200-400	120	1250*710*1480	G1/2
				10	175-350			
				12.5	150-300			
C7H	5.5	7		8	315-630	120	1250*710*1480	
				10	260-520			
				12.5	190-380			
C10H	7.5	10		8	490-980	120	1250*710*1480	
				10	450-900			
				12.5	400-800			
C12H	9	12		8	600-1200	120	1250*710*1480	
				10	540-1080			
				12.5	460-920			

一体化设备，提供高质量压缩空气

Integrated equipment to provide high quality compressed air

独特的专利型节能回路控制可在压缩机停机或处于卸载模式时停止干燥器的运行，从而大幅度降低能耗。持续监控露点，且在露点开始上升时重新启动干燥器。

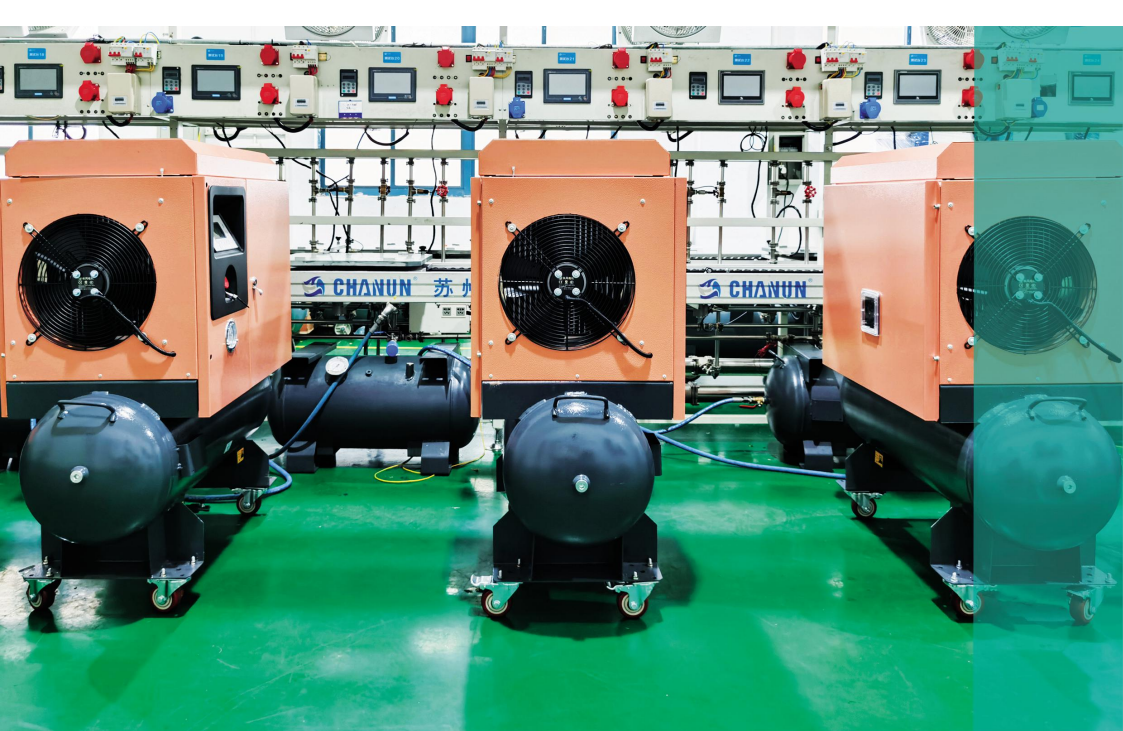
The unique patented energy-saving loop control can stop the operation of the dryer when the compressor is stopped or in unloading mode, thus greatly reducing energy consumption. Also it can continuously monitor the dew point and restart the dryer when the dew point begins to rise.

提供更纯净的空气

Provide more pure air

外部过滤器与集成式冷冻式干燥器可供客户选择，该装置可有效去除水分、悬浮微粒及粉尘颗粒，从而保护您的设备及产品免受损失。高质量的干燥空气可以延长下游设备的使用寿命，进而提高效率，确保您最终产品的质量。

Customers can choose external filter and integrated freezing dryer. The device can effectively remove water, suspended particles and dust particles, thus protecting your equipment and products from loss. High quality dry air can extend the service life of downstream equipment, thus improving efficiency and ensuring the quality of your final product.



单相220V/三相380V

15bar永磁变频螺杆空压机P系列

SINGLE PHASE 220 V / THREE PHASE 380V 15BAR PERMANENT MAGNET VARIABLE FREQUENCY SCREW AIR COMPRESSOR PRO SERIES

产品参数表 Product Parameters Table

型号	功率kW	马力HP	电压V	压力 (bar)	排量L/min	储气罐L	尺寸mm	出口尺寸
C7P	5.5	7	220/380V	15	200-350	120	1090*500*1070	G1/2
C10P	7.5	10	220/380V	15	350-580	120	1090*500*1070	G1/2
C15P	11	15	380V	15	500-1000	220	1240*560*1340	G1/2

※ 机器其他颜色-详询CHANUN
Please contact CHANUN to choose colors of the machine

※ 高温、高湿、高寒、高粉尘等恶劣工况下使用的机器为非标机型。排气量是在额定排气压力下测得，根据国标GB3853 测试（等同于ISO1217 附录C）。
The machine used in the poor working conditions with high temperature, high humidity, high cold, and high dust is non-standard machine. The gas displacement is measured under the rated discharge pressure, and it is tested according to GB standard GB3853 (Equivalent to Appendix C of ISO1217).

※ 外观、规格如改进，恕不另行通知。
Improvement in appearance or specification, without further notice.

针对15bar压力工况特殊订制的双螺杆空压机，轴承，轴封经特殊改进设计13-15bar工作压力以下可长期运行，整机集成于一体，结构紧凑，节省空间。

The double screw air compressor is specially designed for 15Bar pressure condition. The bearing and shaft seal are specially improved and designed. It can run for a long time under 13-15bar working pressure. The whole machine is integrated into one, with compact structure and space saving.

提供13-15bar的压缩空气，特制的高效油气分离系统，保证经高效过滤器处理后的含油量。

Provide 13-15bar compressed air, special high-efficiency oil-gas separation system to ensure oil content after treatment by high-efficiency filter.

特制的加厚真空钎焊板翅式换热器，承压大于等于25bar，保证安全可靠智能控制系统，一键控制自动控制启停，将能效降至最低。

The special thickened vacuum seal welded plate fin heat exchanger has a pressure bearing capacity of 25bar or more, which ensures the safety and reliability of the intelligent control system. One key control automatically controls the start and stop of the heat exchanger to minimize the energy efficiency.

采用耐180°C高温永磁材料，有效的保证了永磁机组永不消磁。高效率电机省电，比功率低。

The permanent magnet material with high temperature of 180 °C is used to effectively ensure that the permanent magnet unit will never be demagnetized. High efficiency motor power saving, and the specific power is low.

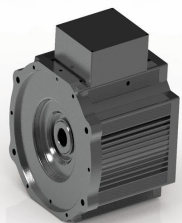


CHANUN 定制高品质螺杆空压机

CHANUN CUSTOMIZED HIGH-QUALITY SCREW AIR COMPRESSOR



▶ **定制油冷电机**
 SCustom oil cooled motor
 一级能效电机，低噪音，IP65防护等级
 First-stage energy-efficient motor,
 Low Noise,IP65 protection grade.



▶ **汽车级永磁电机**
 AUTOMOTIVE PERMANENT MAGNET MOTOR
 IE4高效永磁电机，选用汽车级 N38UH 高牌号永磁体，IP67 防护等级，全封闭式结构制作，独特的真空环氧浸漆，有效的保证了机组运行稳定。
 IE4 high efficiency permanent magnet motor:AUTOMOTIVE PERMANENT MAGNET MOTOR For N38UH high grade permanent magnet, IP67 protection grade, and fully enclosed structure, unique vacuum epoxy dipping paint, effectively guaranteeing the stable operation of unit.



▶ **CHANUN定制变频器**
 CHANUN CUSTOMIZED PERMANENT MAGNET VARIABLE-FREQUENCY SOFT
 采用永磁变频技术，宽电压节能耐用，对电网冲击小。
 Permanent magnet variable-frequency conversion technology, wide voltage, energy-saving, with a small impact on the power grid.



▶ **7英寸触摸显示屏**
 7 Inch touch screen
 大尺寸触摸显示屏，全方位保护监测，对电机具有起停控制，运行控制；对空压机进行逆转保护；对多点温度进行检测和控制保护。
 Large touch screen, all-round protection monitoring, with functions of motor start/stop control, operation control;reversal protection of air compressor; and multi-point temperature detection and control protection.



▶ **可移动性强 (选配)**
 HIGH MOBILITY(optional)
 旋转轻松灵动，使空压机在移动时轻便快捷 (选配)。
 Easy and flexible to rotate, so that the air compressor is able to move conveniently and quickly (optional).

满足全球所有地区电压或特殊电压的定制 为您配备稳定可靠的产品

To meet the world all regions of voltage or special voltage customization providing you with stable and reliable products



晨恩可满足您各种特殊需求定制
 CHANUN can satisfy you each kind of special custom machine